



# 2025 GOVERNOR'S CUP

Saturday 8<sup>th</sup> November 2025

## SUPPLEMENTARY SAILING INSTRUCTIONS & COURSES



*These instructions are to be read as part of the Sailing Instructions of RPYC.*

### 1. ENTRIES:

A skipper, helm, boat owner or person in charge may only register one vessel for this event. The event is only open to Monohull Keelboats.

### 2. RULES:

- Under World Sailing Development Rule DR21-01 (Version 3, effective January 2025), change the definition *Start* as follows:

**Start** A boat starts when her hull having been entirely on the prestart side of the starting line, and having complied with rule 30.1 (I Flag) if it applies, any part of her hull crosses the starting line from the pre-start side to the course side either:

- (a) at or after her starting signal, or
- (b) during the last 5 minutes before her starting signal.

When a boat *starts* in accordance with item (b) of the definition *Start*, she shall not return to the pre-start side of the line, and the starting penalty shall be:

A penalty of ONE minute for each full minute or part thereof if she starts early, plus TWO minutes. This penalty will be added to her actual finishing time for the race. Recall signals will not be made.

- 2.2. RPYC NOR & SIs (Redbook) 1.6 will now read "The penalty for breaking SI 2.5, 5, 8.2 & 14 will be scored DSQ without a hearing (changes RRS 64.2)."
- 2.3. RPYC NOR & SIs (Redbook) 1.8 is changed to read "Based on its own observation, a protest, or on receipt of a report from a disinterested party, the RC may, without a hearing score a boat DSQ for breaking SI 2.5, 2.6, 5, 8.2, 14.4 or 15.1.2 (changes RRS 63.1)."
- 2.4. Add to RPYC NOR & SIs (Redbook) 5.1 clause 5.1.4 as below:
  - 2.4.1 For special events Keelboats classified as Off the Beach Boats, such as Etchells, Flying 15s and Vipers, shall comply with Australian Sailing (AS), Special Regulations Part 2 for Off the Beach Boats
- 2.5. Arbitration will not apply to this event (Delete RPYC clause 1.9 )

### 3. START PROCEDURE: Rule 26 is deleted and replaced with the procedure that follows:

TEN minutes before the start of the race, the Class Flag (NN 1) and Course Flag will be displayed on one hoist accompanied by a sound signal.

SIX minutes before the start the number "65" will be displayed with P Flag or I Flag.

ONE minute before the start, number "60" will be displayed and fall after ONE minute.

The Race Committee may announce times at five-minute intervals on VHF 77.

## START SIGNAL:

Boats shall start at or after the **FALL (when the number disappears)** of their allocated handicap number.

Each number will be displayed for ONE minute.

The **FALL** of a yacht's allocated handicap number will be that yacht's signal to start.

## 4. START LINE:

**RPYC Start Line "A" (Club Line)** – Between the centre of the orange mast on the Starting Box and the outer extremity buoy being a yellow cylindrical inflatable buoy. The inner extremity of the line will be indicated by a red and white striped buoy, that may not be on the line.

## 5. START TIME:

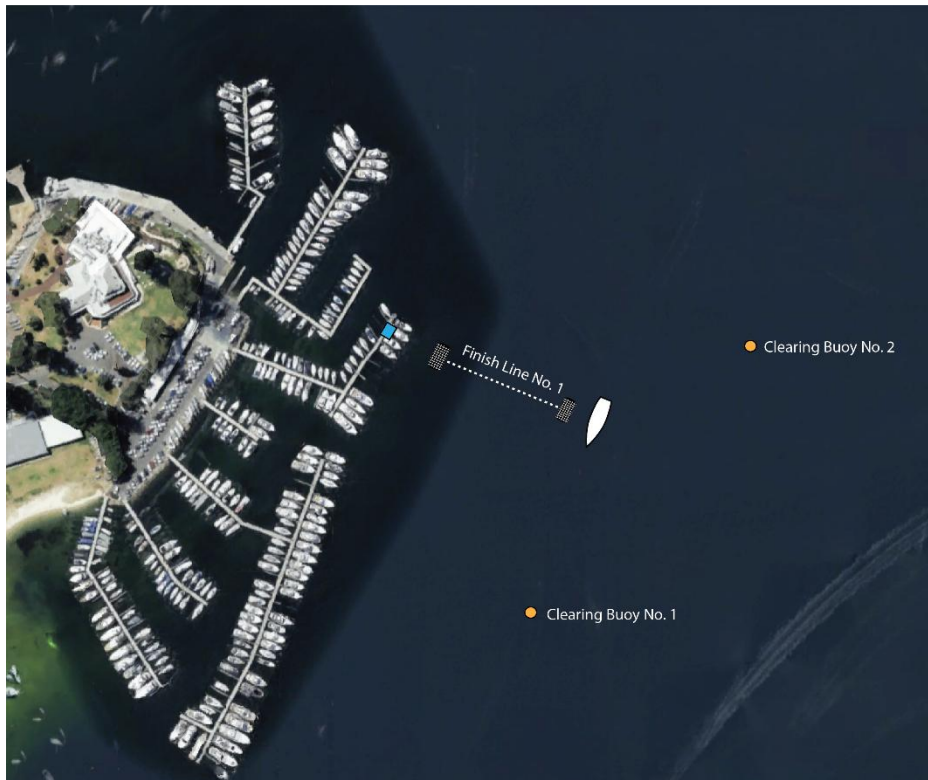
1330 – Fall of 60.

## 6. TIME LIMIT:

Boats that fail to finish by 1730 will be scored DNF

## 7. FINISH LINE:

- 7.1. **RFBYC Finish Line No. 1** is between the triangle above the Start Box and the black & white chequered outer mark placed in an easterly direction from the Start Box. An inner mark will mark the length but not the position of the line.
- 7.2. **KEEPING CLEAR:** After crossing the Finish Line, yachts are requested to observe Orange Clearing Buoys 1 & 2 to port. Please be mindful of boats still finishing and take care to avoid interfering with their finish.



8. **CHANGE OF SKIPPERS (RPYC NOR & SIs (Redbook) SI 2.4.4):** Please be advised that any change of Skipper not approved by the Race Committee from the nominated Skipper, may result in a disqualification by the RC without a hearing.
9. **CLASS FLAG:** Naval Numeral 1 (Yachts are not required to wear Class Flag)
10. **COURSE FLAG:** The course shall be designated by the display of the appropriate International Numeral Pennant below the class flag and may be announced on VHF 77.
11. **SHORTENED COURSE:** The course may be shortened in accordance with Rule 32 & race signals.
12. **RECORDING FINISH:** To assist the finishing team, please record the sail number and name of the boat that finishes immediately in front of you and behind you.
13. **Day Buoys** will be large inflatable buoys as per the course descriptions below. Only Day Buoys specified in the designated courses will be in the water on the day.
  - Please note the approximate position of the Day Buoys is shown on the river maps provided (Appendix A)

# Appendix A - COURSES

## COURSE 1 (11.4 NM)

Start in a South Easterly Direction

FOAM BUOY 55 S

Leaving Foam Spit on the deepwater side

**DAY BUOY (ORANGE)** S

DOLPHIN WEST 42A S

SMITH BUOY 35A P

LUCKY BAY BUOY 35B P

**DAY BUOY (YELLOW)** P

BRICKLANDING BUOY A 33A S

BRICKLANDING BUOY B 33B S

PARKER BUOY 17 P

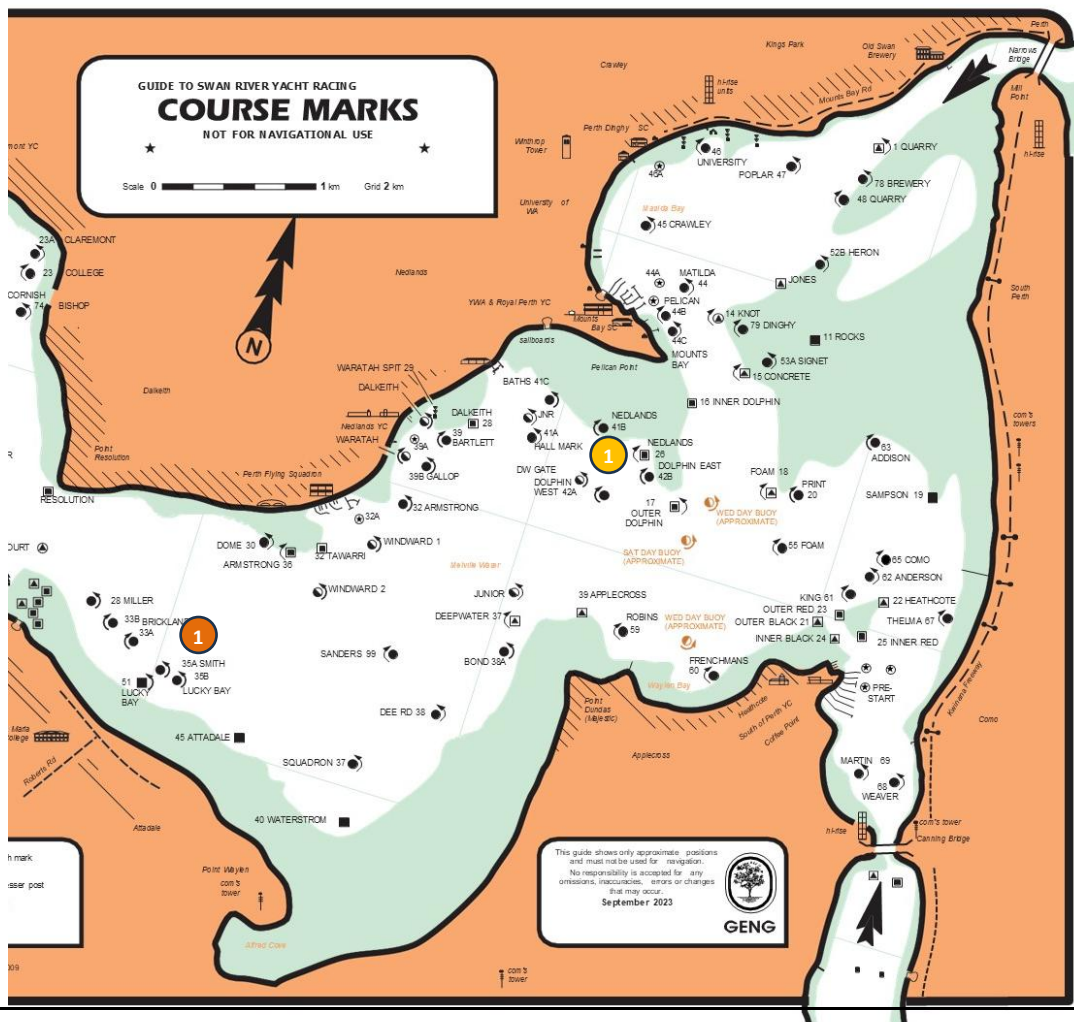
RFBYC FINISH LINE No 1

Finish in a South Westerly Direction

## DAY BUOYS

The **Orange** Day Buoy will be in the vicinity of Bricklanding Buoys

The **Yellow** Day Buoy will be in the vicinity of Dolphin East



## COURSE 2 (10.7 NM)

Start in a South Easterly Direction

COMO BUOY

65

S

Leaving Foam Spit on the deepwater side

HALLMARK

41A

P

**DAY BUOY (GREEN)**

S

ARMSTRONG BUOY

32

P

**DAY BUOY (YELLOW)**

S

**DAY BUOY (ORANGE)**

P

**DAY BUOY (YELLOW)**

S

PARKER BUOY

17

P

RFBYC FINISH LINE No 1

Finish in a South Westerly Direction

### DAY BUOYS

The **Green** Day Buoy will be in Waylen Bay

The **Yellow** Day Buoy will be in the vicinity of Squadron

The **Orange** Day Buoy will be in the vicinity of Dome

