



2024/25 RPYC Off The Beach

Sailing Instructions

- [NP]** denotes that a breach of this rule will not be grounds for a protest by a boat.
- [DP]** denotes a rule for which the penalty is at the discretion of the Protest Committee and may be less than disqualification.
- [SP]** denotes a rule for which a standard penalty will be applied by the race committee without a hearing.

1. RULES

- 1.1. The racing will be governed by the rules as defined in The Racing Rules of Sailing (RRS), the Australian Sailing Special Regulations Part 2, the rules of the respective Classes (except as any of these are altered by the Sailing Instructions), and by the Sailing Instructions.
- 1.2. The Australian Sailing Prescriptions shall apply to all entries.
- 1.3. Appendix B, Windsurfing Fleet Racing Rules will apply for the Bic Techno and WindFoil fleets.
- 1.4. (SP) Australian Sailing Special Regulation Part 2 Off the Beach Boats, will apply. It is the responsibility of all competitors to ensure that life jackets comply with a standard equivalent to those listed in the regulations.
- 1.5. Arbitration will be conducted in accordance with Appendix T.

2. NOTICES TO COMPETITORS

- 2.1. Notices to competitors will be posted on the official notice board located on the front (northeast) windows of the RPYC Dinghy Division clubhouse.

3. CHANGES TO SAILING INSTRUCTIONS

- 3.1. Any change to the Sailing Instructions made ashore will be posted on the official noticeboard in the window of the Dinghy Clubhouse before 0830 on the day it will take effect, except that any change to schedule of races will be posted by 1800 on the day before it will take effect.

4. [DP [NP] SIGNALS MADE ASHORE

- 4.1. Signals made ashore will be displayed from the flagstaff adjacent to the carpark on the Northern frontage of the Dinghy Division Clubhouse.
- 4.2. When flag "AP" is displayed ashore '1 minute' is replaced by 'not less than 30 minutes' in Race Signal AP. This changes "Race Signals".
- 4.3. **[DP]** Flag AP over H ashore means 'Boats shall not leave the beach. Wait for further instructions.' AP over H may be displayed either alone applying to all boats, or over specific class flags in which case this instruction is specific only to those classes. This adds to Race Signals.

5. SCHEDULE OF EVENTS

- 5.1. Events are scheduled as per the RPYC Sailing Handbook “Redbook”.

6. CLASS FLAGS

- 6.1. Class Flags will be as per the table below:

| | |
|-----------------------|--------------------------------|
| Optimist Intermediate | White with blue Optimist Logo |
| Optimist Open | White with blue Optimist Logo |
| ILCA 4 | White with red Laser logo |
| ILCA 6 | White with red Laser logo |
| ILCA 7 | White with red Laser logo |
| Techno 293 | Techno 293 Class Flag |
| Windfoil | Techno 293 Class Flag |
| Finn | White with red Laser logo |
| Tasar | White with red Laser logo |
| Hansa Liberty | Purple with white crane symbol |
| Hansa 303 | Purple with white crane symbol |
| Sabre | White with red Laser logo |

7. RACING AREA

- 7.1. Racing will be run in Matilda Bay and on Melville Waters on the Swan River.

8. THE COURSES

- 8.1. Courses will be announced at the briefing prior to each racing session and may be displayed on a whiteboard on the Start Boat. The diagrams in Attachment A, B, C and D show the courses, the order in which marks are to be passed and the side on which each mark is to be left.
- 8.2. **[SP][NP] Active Start / Finish Line:** Except when starting or finishing, boats shall not sail through a Start / Finish line when an orange flag is displayed on the Committee boat.

9. MARKS

Marks will be yellow and orange pimple buoys

10. The Start

- 10.1. The starting sequence will be a three-minute sequence. This changes RRS 26.
3 min – Class Flag up – one sound
2 min – Preparatory flag up – one sound
1 min - Preparatory flag down - one sound
0 min – Class Flag down – one sound
- 10.2. The starting line will be between the staff displaying the orange flag on the Committee Boat at the Starboard end of the line and the yellow inflatable buoy at the Port end.
- 10.3. To alert boats that a sequence of races will begin soon, an orange flag will be displayed on the Race Committee Boat at least one minute before a warning signal will be displayed. One minute before the warning signal for the first class in a start sequence an Attention signal will be made consisting of multiple sound signals.
- 10.4. **[DP] [NP]** Boats whose warning signal has not been made shall avoid the starting area during the start sequence for other fleets.
- 10.5. A boat starting more than 4 minutes after her starting signal may be scored as ‘did not start’. This changes RRS A4

10.6. The Race Committee may start more than one class at the same time and may change the sequence of classes being started. There will be no prior warning that more than one class will be started, and it shall be the responsibility of boats to heed the class flags displayed with the warning signals.

10.7. Fleets which have a general recall will go to the end of the starting order and as per SI 10.4 shall remove themselves from the starting area.

11. The Finish

11.1. **For trapezoid courses**, the finishing line will be between a staff displaying an orange flag on a race committee boat at the starboard end, and a yellow cylindrical buoy at the port end.

11.2. **For windward / leeward courses**, the finishing line will be between a staff displaying an orange flag on a race committee boat at the starboard end, and a yellow cylindrical buoy at the port end.

11.3. **For slalom courses**, the finishing line will be between a staff displaying an orange flag on a race committee boat at the port end, and a yellow cylindrical buoy at the starboard end.

12. PENALTIES

12.1. **[DP](NP)** A boat that has taken a penalty or retired under RRS 31 or 44.2 shall complete an acknowledgement form at the Sign On desk within the protest time limit.

13. PROTESTS AND REDRESS

13.1. A boat wishing to protest or request redress shall inform the Finish Boat at the finish or soon after of its intention to protest. Failure to advise the RC as per SI 14.1 shall cause the protest to be invalid and the protest dismissed without a hearing. This changes RRS 63.1.

13.2. Protest forms are available in the OTB Canteen. Protests and requests for redress shall be delivered to the Race Officer of the day within one hour of the finishing time of the last boat in its last race of the day, or the time the race committee signals 'no more racing today', whichever is later. This changes RRS 61.3.

13.3. Breaches of SI's 16.2, 16.3, 16.4 and 12.1 will not be grounds for protest by a boat. This changes RRS 60.1(a).

13.4. An arbitration hearing under RRS T will be conducted for all protests lodged in accordance with rule 61 which allege an infringement of a rule of Part 2 or rule 31. Such hearings will be held after the protest being lodged and prior to the protest hearing.

13.5. Provided that RRS 44.1 (b) does not apply, RRS T permits a boat that has broken a rule of Part 2 or rule 31 to take a penalty after racing but prior to any protest hearing. Her penalty shall be a 30% scoring penalty as per RRS T1(b). Half point shall be disregarded, and the points of other boats shall not be adjusted.

Procedure:

Following lodgement of a protest and being given 2 copies of the form, the protestee will be instructed to locate the protestor and both parties shall then return to the Nominated location to attend an arbitration meeting.

13.5.1. The time and place of the arbitration meeting will be decided by the arbitrator, and such advice shall be given verbally.

13.5.2. Arbitration meetings will be held after the protest has been lodged and before a protest hearing.

13.5.3. One representative from each boat may attend the hearing, and no witnesses shall be allowed.

13.5.4. The arbitrator shall conduct a brief meeting, take the evidence of the parties and offer an opinion off whether one or other of the boats broke a rule.

13.5.5. A boat may take a post-race penalty.

13.6. **(DP)** If the Protest Committee decides that a breach of a Class Rule has had no significant effect on the outcome of the race it may

13.6.1. Impose a scoring penalty less than disqualification; or

13.6.2. Make another arrangement it decides is equitable.

This changes RRS 64.1

14. SCORING

14.1. The Low Point Scoring System Appendix A4 shall apply.

14.2. Three races are required to constitute a series.

14.3. The number of races to be discarded from a series will be as shown in the table below:

| Number of Races Completed | Number of Drops |
|----------------------------------|------------------------|
| 0 – 4 | 0 |
| 5 – 7 | 1 |
| 8 – 10 | 2 |
| 11 – 13 | 3 |
| 14 – 16 | 4 |
| 17 – 19 | 5 |
| 20 + | 6 |

14.4. When taking part or representing the Club in events outside the Dinghy Division Schedule a Boat may request in writing for average points.

15. SAFETY REGULATIONS

15.1. **[DP]** Boats not leaving the beach for a scheduled race shall promptly notify the Race Office.

15.2. **[SP] [NP]** Before leaving to race for each scheduled racing session, all skippers and crew shall personally sign-on on the required Race Committee form located outside the Off the Beach Club Room.

15.3. **[SP][NP]** Within protest time limits after returning ashore, a crew shall personally sign-off on the required form.

15.4. **[SP] [NP]** A boat that retires from racing shall notify the Race Committee before leaving the racing area, and shall complete a retirement declaration form before the expiry of the protest time limit.

15.5. **[DP]** Boats shall not sail into the racing area whilst other fleets are racing. Boats not racing shall remain clear of boats that are racing and official boats.

16. [DP] MEASUREMENT CHECKS & REPLACEMENT OF CREW OR EQUIPMENT

16.1. All competing yachts shall conform to the measurement requirements of their respective Class rules. Random measurement checks and inspections may be carried out in any class at any time.

16.2. Substitution of competitors shall not be allowed without prior written approval at the first reasonable opportunity. Forms are available at the Boating Operations Office.

16.3. Requests made on the water must be confirmed in writing at the next available opportunity.

17. [DP] RADIO COMMUNICATION

Except in an emergency, a boat shall neither make radio transmission while racing nor receive radio communications not available to all boats. This restriction also applies to mobile telephones, GPS devices, smart watches and message receiving watches while afloat except in an emergency or when using equipment provided by the Race Committee.

18. Prizes

18.1. Prizes for the season will be awarded as follows:

18.1.1. 1st, 2nd and 3rd places for fleets with 6 or more boats on Championship & Consistency

18.1.2. 1st and 2nd places for fleets with 4-6 boats on Championship & Consistency

18.1.3. 1st place only for fleets with less than 4 boats on Championship & Consistency

18.1.4. 1st place in each fleet on Consistency for the Trophy Races throughout the season:

Commodore's Trophy

Vice Commodore's Trophy

Captain Sail Trophy

Captain Dinghies Trophy

18.1.5. To the boat who has the most, fastest times throughout the season in each fleet.

18.1.6. Donald G Thomas Memorial Trophy – Junior Encouragement Award

18.1.7. Diego Figueroa Perpetual Trophy – Optimist Most Improved Sailor

18.1.8. Gary Marshall Memorial Trophy – Most Valued Dinghy Division Volunteer

18.1.9. Chris Goldacre Award – Dedication to Board Sailing

18.2. Prizes will be awarded to first, second and third placegetters in fleets consisting of more than seven boats. In fleets with seven boats or less, prizes will be awarded to first and second place only.

19. DISCLAIMER OF LIABILITY

19.1. Competitors participate in the racing entirely at their own risk.

19.2. It is the competitors' decision to enter the Event or to start and continue in any race. Competitors shall accept that their participation in the Event is at their exclusive risk in every aspect. By way of entry in the Event competitors must indemnify the Organising Authority their Offices, members, staff, volunteers and agents in respect to all claims and demands of whatever nature which may be made upon them in connection with or howsoever arising from their participation or intended participation in the Event.

19.3. Competitors are responsible for the seaworthiness of the boat that they are sailing and for the sufficiency and adequacy of its equipment for the prevailing conditions.

19.4. The Organising Authority their offices, members, staff, volunteers and agents accept no responsibility in respect to loss of life, personal injury or loss or damage of property which may be sustained by reason of their participation or intended participation in the Event howsoever arising in connection with the Event.

19.5. Competitor attention is drawn to RRS 4 – Decision to race.

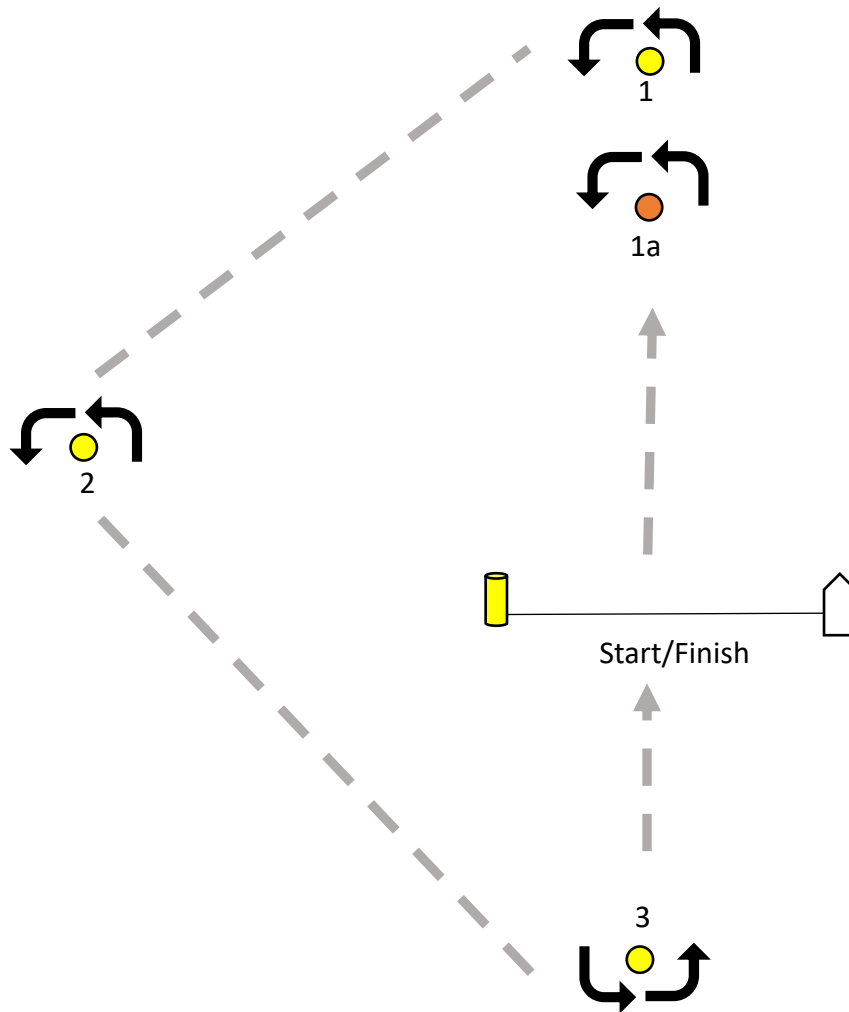
20. INSURANCE

20.1. Vessels shall be insured with valid third-party liability insurance with a minimum cover of \$10,000,000 per event or equivalent. It is also recommended that vessels shall be insured with comprehensive cover for racing.

20.2. The organising authority may request a copy of the Certificate of Currency

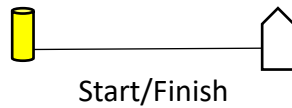
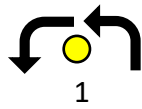
Attachment A – Triangle Courses

| | |
|-------------------|---------------------------------|
| Triangle 1 (T1) | Start-1-2-3-Finish |
| Triangle 2 (T2) | Start-1-2-3-1-3-Finish |
| Triangle 3 (T3) | Start-1-2-3-1-3-1-2-3-Finish |
| Triangle 1A (T1A) | Start-1a-2-3-Finish |
| Triangle 2A (T2A) | Start-1a-2-3-1a-3-Finish |
| Triangle 3A (T3A) | Start-1a-2-3-1a-3-1a-2-3-Finish |

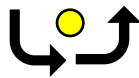


Attachment B – Windward Leeward Courses

| | |
|---------------------------|--------------------------|
| Windward Leeward 1 (W1) | Start-1-2-Finish |
| Windward Leeward 1a (W1a) | Start-1a-2-Finish |
| Windward Leeward 2 (W2) | Start-1-2-1-2-Finish |
| Windward Leeward 2a (W2a) | Start-1a-2-1a-2-Finish |
| Windward Leeward 3 (W3) | Start-1-2-1-2-1-2-Finish |

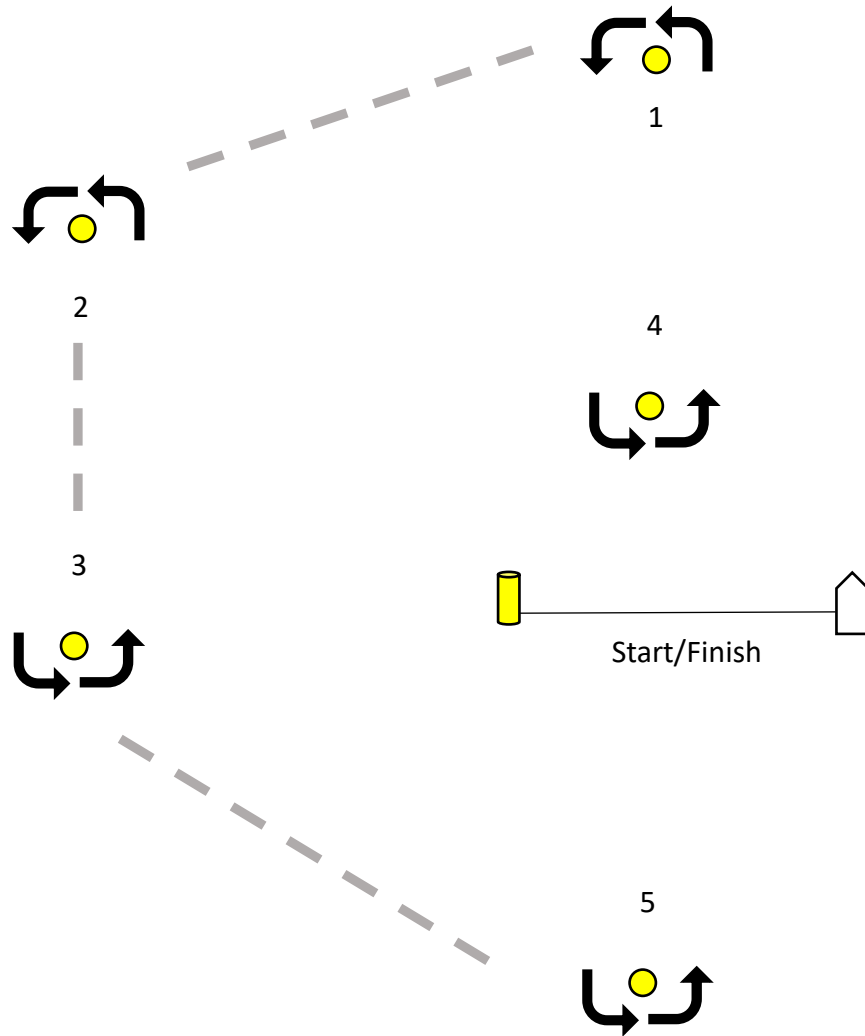


2



Attachment C - Trapezoid Courses

| | |
|------------------------|------------------------------|
| Outer Trapezoid 1 (O1) | Start-1-2-3-2-3-5-Finish |
| Inner Trapezoid 1 (I1) | Start-1-4-1-2-3-5-Finish |
| Outer Trapezoid 2 (O2) | Start-1-2-3-2-3-2-3-5-Finish |
| Inner Trapezoid 2 (I2) | Start-1-4-1-4-1-2-3-5-Finish |



Attachment D – Slalom Courses (Boards Only)

| | |
|---------------|------------------------------------|
| Slalom 1 (S1) | Start-1-2-1-Finish |
| Slalom 2 (S2) | Start-1-2-1-2-1-Finish |
| Slalom 3 (S3) | Start-1-2-1-2-1-2-1-Finish |
| Slalom 4 (S4) | Start-1-2-1-2-1-2-1-2-1-Finish |
| Slalom 5 (S5) | Start-1-2-1-2-1-2-1-2-1-2-1-Finish |

